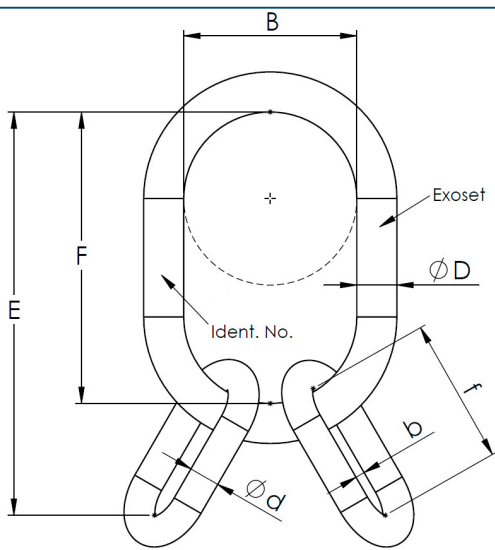


CHAIN ACCESORIES XO MASTER LINK ASSEMBLY

Master link assembly
Aufhängering



- Approx. 30% less weight as Grade 80
- -20°C-200°C: 100%
- 200°C-300°C: 90%
- 300°C-380°C: 60%
- Ral 5001



| Art. | Size | WLL | E | D | F | B | d | f | b | Weight |
|---------------|------|-------|-----|----|-----|-----|----|-----|----|--------|
| | mm | ton | mm | mm | mm | mm | mm | mm | mm | kg |
| CHKR4R-P201A1 | 6 | 3,00 | 170 | 16 | 110 | 60 | 13 | 60 | 30 | 1,00 |
| CHKR4R-P202A1 | 8 | 5,30 | 210 | 20 | 140 | 80 | 16 | 70 | 35 | 2,20 |
| CHKR4R-P203A1 | 10 | 8,00 | 270 | 26 | 180 | 100 | 20 | 90 | 45 | 3,80 |
| CHKR4R-P204A1 | 13 | 14,00 | 350 | 32 | 230 | 125 | 26 | 120 | 60 | 7,70 |
| CHKR4R-P205A1 | 16 | 21,20 | 420 | 40 | 290 | 160 | 28 | 130 | 65 | 13,00 |
| CHKR4R-P206A1 | 20 | | | 50 | 340 | 190 | 36 | | | |